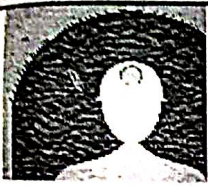
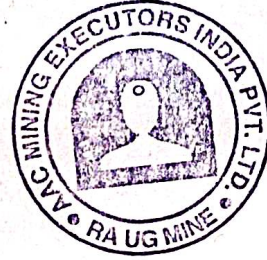


7



AAC MINING EXECUTORS INDIA PVT LTD

EVALUATION AND EXECUTION OF EXPLORATION MINING AND ENGINEERING PROJECTS



AAC MINING EXECUTORS INDIA PTV LTD

HEALTH & SAFETY MANAGEMENT PLAN

© Copyright. This document is the property of AAC Mining Executors India PVT LTD and its subsidiaries and all rights are reserved in respect of it. This document may not be reproduced or disclosed in any manner whatsoever, in whole or in part, without the prior written consent of the Executive Director, AAC Mining Executors India PVT LTD. AAC Mining Executors India PVT LTD expressly disclaims any responsibility for or liability arising from the use of this document by any third party.

Plot 6, Flat No 104, Fountain Square, Jagatpura Road, Jawahar Circle, Jaipur - 302017
Mail: Administrator@aacmining.com.zm
PAN AAKCA2593D

Document #: AAC-RAUG-SAF-PLN-003

Page 1 of 24



1 Purpose

AAC Mining Executors RAUG Mine Health & Safety Management System (HSMS) has been developed to meet the objectives of AAC Mining Executors India PVT LTD's Occupational Health, Safety and Environment Policies. The HSMS has been developed to ensure the Health and Safety of all persons associated with AAC Mining Executors operations.

AAC Mining Executors RAUG Mine's HSMS incorporates the following:

- Organisation Policy and Structure
- Risk Management
- Management System Planning and Implementation
- Hazard Materials and Substances Management
- Accidents, Incident, Injuries and Hazard Management
- Maintenance, Inspection, Monitoring and Testing
- Work Systems
- Persons on Site
- Working on Site
- Records and Documentation
- Audits and Reviews
- Training and Competencies

This Health & Safety Management System Manual details AAC Mining Executors RAUG HSMS and provides guidance on the implementation and application of strategies to achieve best practice management



2 Scope

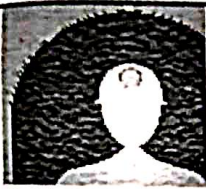
This health & safety management plan covers all areas of AAC Mining Executors operations.

The personnel covered under this safety management plan include:

- AAC RAUG Management
- Employees
- Sub-contractors and employees
- Equipment suppliers and employees
- Other visitors to site

3 Definitions

Hazard	A source of potential harm or a situation with a potential to cause loss.
Impact	Any change to health and safety, the environment or community, resulting from an operation's activities, products or services.
Risk	Any event that could have an impact upon personnel, the environment, community or the business. It is measured in terms of consequences and likelihood (probability).
Risk Assessment	The process used to determine risk management priorities by evaluating and comparing the level of risk against predetermined standards, target risk levels or other criteria.
SWP	AAC Mining Executors Standard Written Procedure
SWI	AAC Mining Executors Standard Work Instruction
FRM	AAC Mining Executors Standard Form
Safety & Training in Charge	Develops, implements and evaluates risk management policies and programs, trains employees in occupational health and



H&S

safety procedures, monitors and audits the workplace, and records and investigates incidents to ensure safe and healthy working conditions.

Health and Safety - also refers to Work Health & Safety; Occupational Health and safety; Mining and quarrying Health and Safety

4 Principles

The Management Plan is an integral part of the overall Corporate Governance of AAC Mining Executors operations.

The overall benefits that are derived from working the plan are the demonstrable achievement of objectives and improvement of performance including

- Health and Safety
- Security
- Regulatory compliance
- Environmental protection
- Asset quality and confidence
- Project management
- Resource efficiency
- Operational efficiency

The structured approach to Safety management utilises the best available information and aids in the decision making process through the judicious use of risk management systems from our front line systems of star cards and hazard reporting right through to formal risk assessments, Standard Work Instructions and Standard written procedures.

5 Framework

The management plan has at its core, a structured management framework on which the processes are based. A strict adherence to reviewing and maintaining the foundations ensure that the procedures can operate without hindering the achievement objectives.

5.1 SafetyPolicy

AAC Mining Executors specialises in contract mining. The objective of the management is to provide these services in a manner which conforms or exceeds our customer's expectations to maintain our position in the marketplace.

In order to achieve this objective, it is the policy of AAC Mining Executors to establish and maintain an effective and efficient Health and Safety system planned and developed in conjunction with other



management functions. Determination of conformation to standards is made on the basis of objective evidence of quality and acceptable levels of risk.

The Health and Safety management plan is based upon the requirements set out in AS/NZS 4801 – 2001; AS/NZS 4804 – 2001 and AS/NZS/ISO-31000:2009. This policy is to be understood, implemented and maintained by all staff.

5.2 Mandate and commitment

The General Manager and all Department Managers recognise that the management of AAC Mining Executors' safety is a vital component of achieving operational objectives. By communicating the importance of safety and actively participating in procedure development they obtain ownership and commitment to the overall process.

Responsibilities and authorities have been assigned to appropriate personnel and resources allocated accordingly.



5.3 Responsibilities

General Manager	<p>Appoint responsible persons</p> <p>Ensure plans identifying and showing the extent of the mine are up-to-date.</p> <p>Provide adequate resources to ensure that effective safety management processes are used and that all identified hazards and risks are effectively controlled.</p> <p>Ensure that the risk to persons and the environment from operations is at an acceptable level.</p> <p>Review procedures to ensure the risk to persons from operations is at an acceptable level.</p> <p>To ensure the risk to persons from plant or substances are at an acceptable level.</p> <p>To develop and implement a Health and Safety Management System.</p> <p>To develop, implement and maintain a management structure that helps ensure the Health and Safety of persons.</p> <p>To provide for:</p> <ul style="list-style-type: none">• adequate planning, organisation, leadership and control of operations;• carrying out critical work which requires particular technical competencies;• adequate supervision and control of operations on each shift;• Appropriate inspection of each workplace including, where necessary, pre-shift inspections. <p>To inform the Mine Manager as soon as practicable of:</p> <ul style="list-style-type: none">▪ an injury or illness caused from operations that causes an absence from work for more than 1 shift;▪ a high potential incident;▪ any proposed changes to operations, plant or substance used that may affect the Health and Safety of persons;▪ the presence of an inspector or inspection officer; and▪ a directive given by an inspector or inspection officer.
Department Managers	<p>Develop and maintain SWP's and SWI's for activities and processes under their control.</p> <p>Develop and maintain a Training needs analysis for all staff.</p> <p>Ensure that assets under their control are included in the asset register and that scheduled servicing, maintenance and testing have been conducted.</p> <p>Utilise processes to identify hazards which may impact on the health and safety of the employees, the environment and the local community.</p> <p>Communicate the safety management process and potential effects to staff and to seek feedback.</p>



Safety
Training
Charge

- & Development, implementation and management of the site H&SMS.
- in Auditing and reviewing of H&SMS performance.
- Reporting H&SMS performance to the General Manager.
- Direct the Safety Advisors on requirements for contractual obligations.
- To inspect parts of the operation and participate in inspections and investigations conducted by the General Manager, his delegate or an inspector.
- To review procedures in place to control the risks to workers to ensure it is at an acceptable level.
- To review circumstances of injuries, illnesses and high potential incidents.
- To consult with supervisors about corrective and preventative actions and other H&S matters.
- To consult with representatives, inspectors, advisers and independent experts.
- To help in the resolution of health & safety issues.
- To investigate complaints from workers about health & safety.
- To refer health & safety matters to the General Manager as appropriate.



AAC MINING EXECUTORS INDIA PVT LTD

EVALUATION AND EXECUTION OF EXPLORATION MINING AND ENGINEERING PROJECTS

Safety

Follow the directions of the Safety & Training in Charge

Advisor

Ensure that safety is managed to a consistent and high level across site

Utilise processes to identify hazards which may impact on the health and safety of the employees, the environment and the local community

Communicate the safety management process and potential effects to staff and to seek feedback.

To inspect parts of the operation and participate in inspections and investigations conducted by the SSE, a supervisor or an inspector.

To review procedures in place to control the risks to workers to ensure it is at an acceptable level.

To review circumstances of injuries, illnesses and high potential incidents.

To consult with supervisors about corrective and preventative actions and other H&S matters.

To consult with district workers' representatives, inspectors, advisers and independent experts.

To help in the resolution of Health and Safety issues.

To investigate complaints from workers about Health and Safety.

To refer Health and Safety matters to the SSE as appropriate.

Supervisors

Ensure that the system of controlling work carried out meets or exceeds expectation.

Ensure that records are kept and maintained.

Staff are adequately trained, qualified and competent to perform duties.

Actively participate in decisions involving the development of safety systems on site.

Adequately resource tasks.

Ensure that all identified hazards and risks are effectively controlled.



All
Personnel

Utilise processes to identify hazards and control risks associated with assets.

Communicate issues or concerns as appropriate.

Hazard / Near miss reporting.

All workers (employees and contractors) may affect and have responsibility for the safety of themselves and all other personnel on the site. All workers have the following H&S obligations:

To comply with standard work instructions and procedures.

To supply information required by others to protect themselves from the risk of injury or illness.

To take reasonable and necessary courses of action to ensure persons are not exposed to unacceptable levels of risk.

To manage the risk of injury or illness to themselves or others to ensure an acceptable level of risk.

To ensure, to the extent of their responsibilities and duties, the risk of injury or illness to all persons is managed to ensure an acceptable level of risk.

To participate in and conform to risk management practices of the operation.

To comply with instructions on Health and Safety provided by the operator, General Manager or a supervisor.

To work only if the worker or other persons are in a fit condition to carry out the work without affecting the Health and Safety of themselves or others.

To not do anything wilfully or recklessly that might affect the Health and Safety of someone else at the mine.



5.4 Integration

The management plan is part of an integrated management system. Prior to making any changes to this document, reference must be made to other Management plans and functions to ensure that conflicts do not occur.

5.5 Resources

All work performed on site is to be adequately resourced by competent personnel. The minimum qualifications, licences and competencies for each task are included in the SWI's. Line managers and personnel performing these tasks are to ensure that they are appropriately skilled and qualified.

5.6 Supervision

The compliance of staff to AAC Mining Executors' safety management systems is the duty of the relevant supervisor for those staff. All persons however have a duty of care towards each other and are obligated to stop any unsafe activity they witness if it is safe to do so.

The Supervisor shall ensure that all work is carried out in accordance with AAC Mining Executors' written procedures and instructions.

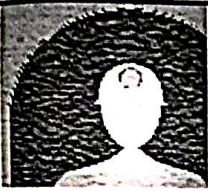
5.7 Fit for Duty

All staff must be assessed for fitness to carry out their tasks by their respective Supervisor prior to commencing Duty. If any person believes they are unfit to perform a task they are obligated to speak to their supervisor.

5.8 Personnel records

Records and documentation will be kept of all proceedings relating to Health and Safety at AAC MINING EXECUTORS at the locations identified under their sections in this manual.

All records and documentation shall be kept for the period of the operation. Disposal of documentation shall only occur for hard copy documents to prevent the use of obsolete items.



5.9 Position Descriptions

Position Descriptions outlining the responsibilities, accountabilities, authorities and duties for each position are kept on the document register. These documents will be made available as part of the recruitment process and will be part of any Personal Development Review for employees.

They are reviewed and maintained periodically by the Department Manager and Human Resources. Copies are included in the appendices and outline

- Reporting
- Responsibilities
- KPI's
- Critical skills and attributes
- Training

5.10 Contractors

It is the practice of AAC Mining Executors to use various contractors from time to time. The management of contractors is the responsibility of the respective Department Manager with whom the contractor is engaged.

The responsibility for risk control and safe work methodology rests with the contractor. It is a requirement of AAC Mining Executors that an acceptable management plan is submitted, audited and signed off prior to commencement by the relevant Department Manager. This plan will be kept on file and referenced by the Department Manager accordingly. All licences, qualifications and other statutory and regularity compliance evidence will be copied and placed on the contractors file. AAC Mining Executors management will respect the contractor and treat all documents in a confidential manner.

Contractors will be suitably inducted for the site and specific area where works are to take place.



5.11 Training

Personnel performing work shall be deemed competent on the basis of appropriate education, training, skills and experience.

A training matrix will be maintained by the Safety and Training.

Department Managers shall determine the competency levels required for performing each task and develop a training needs analysis. Requests for staff training are forwarded to the site training department. Once training has been provided, Department Managers evaluate its effectiveness in relation to providing the required skills and competencies.

Department Managers will provide copies of all contractors' licences, qualifications and other statutory and regularity compliance evidence to the Training Department to be included into the training matrix. AAC Mining Executors management will respect the contractor and treat all documents in a confidential manner. Training in health, safety, environment, and community and quality management is provided for all personnel. Training Programs or Awareness Sessions are required to contain Health and Safety content based on the operation's significant Health and Safety risks.

Training plans are developed and the effectiveness of training and competencies are evaluated, assessed and records of education, skills, competency assessment and experience maintained.

Training topics include but are not limited to:

Company Policies and Standards

General induction training

Health and Safety Management systems(HSMS) training

Environmental Management System (EMS) Training

Significant risk activities

Conformance with policy & procedures

Roles and Responsibilities

Consequence of departure from specified procedures

Emergency response procedures

Competency assessments are required to be mapped to a competency from an endorsed national training package or equivalent. All training records are maintained and in hardcopy on personnel files.



6 Documentation

6.1 Standard Written procedures (SWP)

Standard Written Procedures have been developed for tasks associated with the installation and maintenance of AAC Mining Executors assets and describe the interrelated processes and activities. The development and implementation of SWP's ensure currency with Legislation and industry best practice.

The SWP's are available from the Document Register database and include:

- Title.
- Purpose of the procedure.
- Scope – areas to be covered and not to be covered.
- Responsibility and authority of people and/or organisational functions.
- Description of activities
 - define needs of the organisation, its customers and suppliers.
 - describe the process in terms of test and/or flow charts related to the activities.
 - establish what is to be done, by whom or by which organisational function – why, where, when and how.
 - describe process controls.
 - define necessary resources for the accomplishment of the activities.
 - personnel, training, equipment.
 - define the appropriate documentation related to the activities.
 - define the input and output of the process.
 - define the measurements to be taken.
- Records
 - records related to activities.
 - forms to be used.
 - method to complete.
 - file and keep the records.
- Appendices – contain information supportive to the procedure.
- evidence of review and approval.
- status and date of revision.
- nature of changes.



6.2 Standard Work Instructions (SWI)

Standard Work Instructions have been developed to provide detailed instructions for tasks associated with the installation and maintenance of AAC Mining Executors assets and the operation of plant and equipment on site.

The SWI's are available from the Document Register database and include:

- Title and unique identification.
- Evidence of review and approval.
 - revision level and date of revision.
 - nature of changes .
- Records
 - records specified.
 - method to complete.
 - file and keep the records.
 - forms used for these records.

6.3 Standard Forms (SFM)

Standard Forms are used to record and document activities, test results, incidents, requests etc.

The SFM's are available from the Document Register database and include:

- Title.
- Identification number.
- Revision level.
- Date of revision.

6.4 Document control

The AAC-RAUG-SAF-PRO-004 Document & Data Control Procedure located in: \\AACSERVER\Policy & Procedure\AAC HSMS Documents\Safety\Procedures provides a managerial process to ensure that documents

- are approved prior to issue.
- are reviewed and updated as necessary (and re-approved).
- changes and current revision status are identified.
- relevant version are available at point of use.
- remain legible and readily identifiable.



- of external origin are identified and distribution controlled
- obsolete documents are suitably identified as obsolete if retained for historical purposes to prevent unintended use.

This procedure defines

- controls for identification, storage, protection, retrieval, retention time and disposition of records.
- document approval, issue and control.
- Reviews are undertaken by the intended user and by management approving the document.
- Distribution of pertinent documents are issued to personnel who require them.
- process for
 - initiation.
 - Development.
 - review and improvement.
 - Control.
 - incorporation of changes to documents .
 - replacing revised documents with the latest version.
 - use of the document master list.
 - recording history of changes to documents.
 - identifying uncontrolled documents.

7 Risk Management

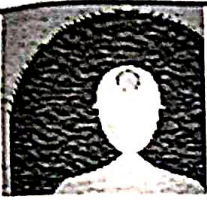
Risk Management is an intrinsic management tool that is embedded into the culture of AAC Mining Executors. The principles and processes derived from AS/NZS/ISO-31000:2009 are integrated into Organisational processes and used to guide decision making.

The AAC-RAUG-SAF-PLN-001 Risk Management Plan located in: \\AACSERVER\Policy & Procedure\AAC HSMS Documents\Safety\Plans is broken into two key areas

7.1 Framework

The Risk Management Framework provides the platform on which the risk process operates and includes

- Policy.



- Accountabilities.
- Integration procedures.
- Resources.
- Communication and reporting mechanisms.

7.2 Process

The Risk Management Process is the group of activities that manage risk to an acceptable level and includes:

- Communication and consultation with all stakeholders
- Risk assessment
 - Identification
 - Analysis
 - Evaluation
- Risk treatment
 - Options
 - Plan (including Change Management)

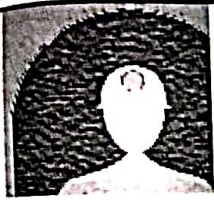
The key risk control tools utilised in safety management are

- SWP's
- SWI's
- SFM's
- JSEA's
- SWMS'
- CMMS
- Star cards
- Hazard reports

7.3 Change Management

AAC Mining ~ Executors AAC-RAUG-SAF-PRO-008 Change Management Procedure is located in: \\AACSERVER\Policy & Procedure\AAC HSMS Documents\Safety\Procedures. This procedure consists of

- 1 Revision history
- 2 Purpose
- 3 Scope
- 5 Definitions
- 6 Responsibilities



7	Actions
8	Document control
9	Review
10	References
11	Appendices

8 Process

8.1 Communication and consultation

A key component of the management process is the consultation with stakeholders. It is vital that communication is effected to provide information pertaining to activities including

- Purpose
- Process
- Duration
- Person responsible
- Effects on personnel and environment
- Potential hazards and risks
- Control measures

Department Managers ensure personnel are aware of the relevance and importance of activities and how they contribute to objectives.

A daily Department Managers meeting takes place to address operational planning and resource requirements including those that may impact upon or influence safety and environment.

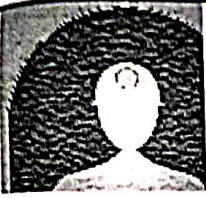
Communication on site is via UHF radio.

8.2 Safety meetings

Safety Meetings are held on a weekly basis. Safety meetings allow safety, health, environmental and training issues to be raised and ultimately resolved by appropriate personnel. Any items raised at the meeting and all hazards reported are discussed at the meeting.

Safety meeting minutes are produced by the client. Minutes identify non-compliance items, actions to be undertaken, resources required, responsibilities and the expected completion date.

The Safety notice boards across site will provide details to staff of the time and date of the next safety meeting and supervisors will be notified by Email in a timely manner so as to make the necessary adjustments to free delegates up for the meetings.



8.3 Daily managers meeting

A daily meeting takes place which involves all of the Department heads. This meeting is used to communicate the activities that have taken place or are planned that may affect the site. Managers also report on the performance against departmental Key Performance Indicators.

9 Key Performance Indicators

Key performance indicators (KPI's) are an integral part of the Personnel Effectiveness Review for employees and Departmental effectiveness analysis. The key performance indicators for the Health and Safety team are

- Involvement with Workplace Inspections.
- Ensure compliance to Statutory Testing and Record keeping.
- Assist the management team in delivering high levels of safety performance.

10 High Risk activities

AAC Mining Executors management recognise that all risk must be controlled to an acceptable level. Certain activities on site are deemed high risk and are managed to a level as low as reasonably practicable.

A permit to work system exists for high risk activities that are not adequately covered by routine processes.

10.1 Confined spaces

Prior to conducting any work in confined spaces, a full understanding of the work to be carried out must be gained. A permit to work system operates to carry out confined space work and details the diligent planning, risk controls, monitoring and emergency / evacuation procedures associated with the specific activity. This document is to be read, fully understood and followed by all personnel connected with the activity. It must be signed off by the delegated, authorised personnel prior to the commencement of activities.

11 Accidents and Incidents

11.1 General

All personnel are responsible for their own safety, environmental effects and the safety of others. This is embedded into the culture at AAC Mining Executors mine and as a site is our single highest priority. A key management tool in this process is the communication and consultation of hazards and risks. An open culture encourages personnel to report all incidents (including near misses) to their immediate supervisor as soon as practicable after they occur.



Appropriate forms are available in the document register to report any accident/incident involving personnel, equipment and the environment and any combination of these.

- AAC-RAUG-SAF-FRM-008 Incident Accident Investigation Form
- AAC-RAUG-SAF-FRM-009 Incident Investigation Witness Statement
- AAC-RAUG-SAF-FRM-010 AAC Mining Incident Reporting Process

When practicable and safe to do so, individuals should immediately rectify hazards created as a result of an incident or accident provided they do not expose themselves or others to any danger. The site should be made safe and secured for investigation purposes. The supervisor or manager responsible for the scope of work where the event occurred will record all incidents.

Investigations of incidents include risk management and remedial actions. Investigation close out is to be signed off by General Manager and Safety & Training in Charge.

12 Emergency Management

12.1 Plan

Potential emergency situations have been identified and the AAC-RAUG-SAF-PLN-002 Emergency Response Plan documented located in \\AACSERVER\Policy & Procedure\AAC HSMS Documents\Safety\Plans which describes the required processes to be followed in the event of a situation occurring to prevent and mitigate any associated illness or injury.

12.2 Preparedness and Response

Relevant personnel have been trained and evaluated in the preparedness and response procedures.

12.3 Safety Program

Safety management on site is achieved through the recording of events, observations and near misses both on this site and throughout the industry. This information is then used to direct resources into the areas they are required. AAC Mining Executors personnel are supplied with and trained in the use of safety tools like JSEAs, blue cards and hazard reports to help them determine how best to approach new and unusual tasks.

13 Inputs

13.1 Internal

A variety of communication meetings are scheduled and conducted including but not limited to:

- Daily Managers Meetings
- Pre-Shift Morning Meetings – involving line management
- Weekly Safety Meetings



A variety of internal communication mediums exist to communicate amongst the various levels and functions within the organisation including but not limited to:

- Internal reports
- Site Bulletins and Newsletters
- Significant Incident Alerts
- Injury Alerts
- Handover Meetings
- GM Updates
- Noticeboards
- "State of the Nation" – Quarterly Presentation facilitated by the General Manager

14 General

AAC Mining Executors takes its Occupational Health and Safety responsibilities seriously.

AS/NZS 4801:2001 is used as the benchmark to assess Occupational Health & Safety (OHS) Management.

The management of OHS establishes the framework of compliance with the two fundamental elements of OHS legislation

- that employers provide and maintain a working environment that is safe and without risk
- that employees take reasonable care for the health and safety of themselves and others

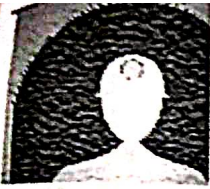
AAC Mining Executors recognises that the protection of the health and safety of all employees is vital to its success and that poor performance can take a heavy financial toll on the business.

In our continually changing workplace environment, the effective assessment and management of OHS issues is paramount.

AAC Mining Executors protects themselves and their employees by implementing an OHS management system. This system helps to ensure that they

- have an effective OHS policy and objectives
- can establish, assess, and review its own OHS procedures
- can demonstrate its commitment to OHS to others
- reduce workplace illness and injury

The Health and Safety Management Plan reflects AAC Mining Executors' commitment to the achievement and maintenance of regulatory compliance and the continual improvement of its Health and Safety practices. This commitment is a fundamental component of AAC Mining Executors' safety policy.



The Health and Safety Management Plan also describes the means for measuring Health and Safety performance in relation to the objectives and targets and it embodies a continual improvement process which is designed to systematically reduce hazards and liabilities while enhancing overall organisational and Safety performance. The implementation of this plan has facilitated the business to deal with the legal imperatives, ethical concerns, industrial relations considerations relating to workplace safety, and to improve its financial performance.

14.1 Management Plans / Manuals

AAC Mining Executors has adopted Management plans and Manuals to control the processes and activities associated with the various Departments and key elements of the business.

These documents are based on AS/NZS ISO 9001 – 2007 Quality management and AS/NZS/ISO 31000 - 2009 Risk management. The key mechanisms of these plans are the framework and processes for identifying and managing the various components and include

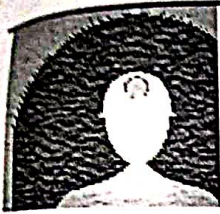
- Policy
- Accountabilities
- Integration procedures
- Resources
- Communication and reporting mechanisms

This approach requires all Departments to identify, control and review the risks of their operations.

The Department Managers develop a needs analysis and instigate the development of procedures to control the processes under their control in accordance with the document control procedure Standard Written Instructions are used as a management tool to control activities.

All staff undertaking activities shall be required to eliminate the risk or otherwise control the risks utilizing the AAC Mining Executors hierarchy of risk control measures:

- Eliminate the risk by ceasing the hazardous component or activity;
- Substitute a less harmful alternative hazardous substance or process;
- Engineer out / reduce the risk by re – designing;
- Isolate or separate the hazard at source using engineering means;
- Administrative controls implemented to minimize exposure to the risk;
- Personnel protective clothing and equipment



14.2 Audits and Inspections

In line with good governance, AAC Mining Executors have H&S inspection audits which are regularly carried out

- Housekeeping audit
- Safety and environmental audit
- Site audit

The audits allows AAC Mining Executors to utilize personnel from all levels of the business to be involved in developing the housekeeping and safety standard across the entire site.

Prior to carrying out an audit, the safety advisors are responsible for reviewing previous audits to determine any outstanding works.

The primary objective of all of these audits is to embed a culture of continuous improvement into the workforce and to lift AAC Mining Executors to a position where they not only meet but exceed all industry standards in regards to safety performance on site.

14.3 Housekeeping audit

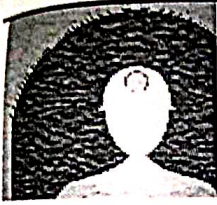
AAC Mining Executors allocates time each week through a generated safety work order for personnel to undertake a housekeeping and safety audit to improve and develop their area.

14.4 Site audit

A manager's walk around audit is carried out by a manager.

Any non-conformances that are identified are brought to the attention of the area supervisor for immediate rectification.

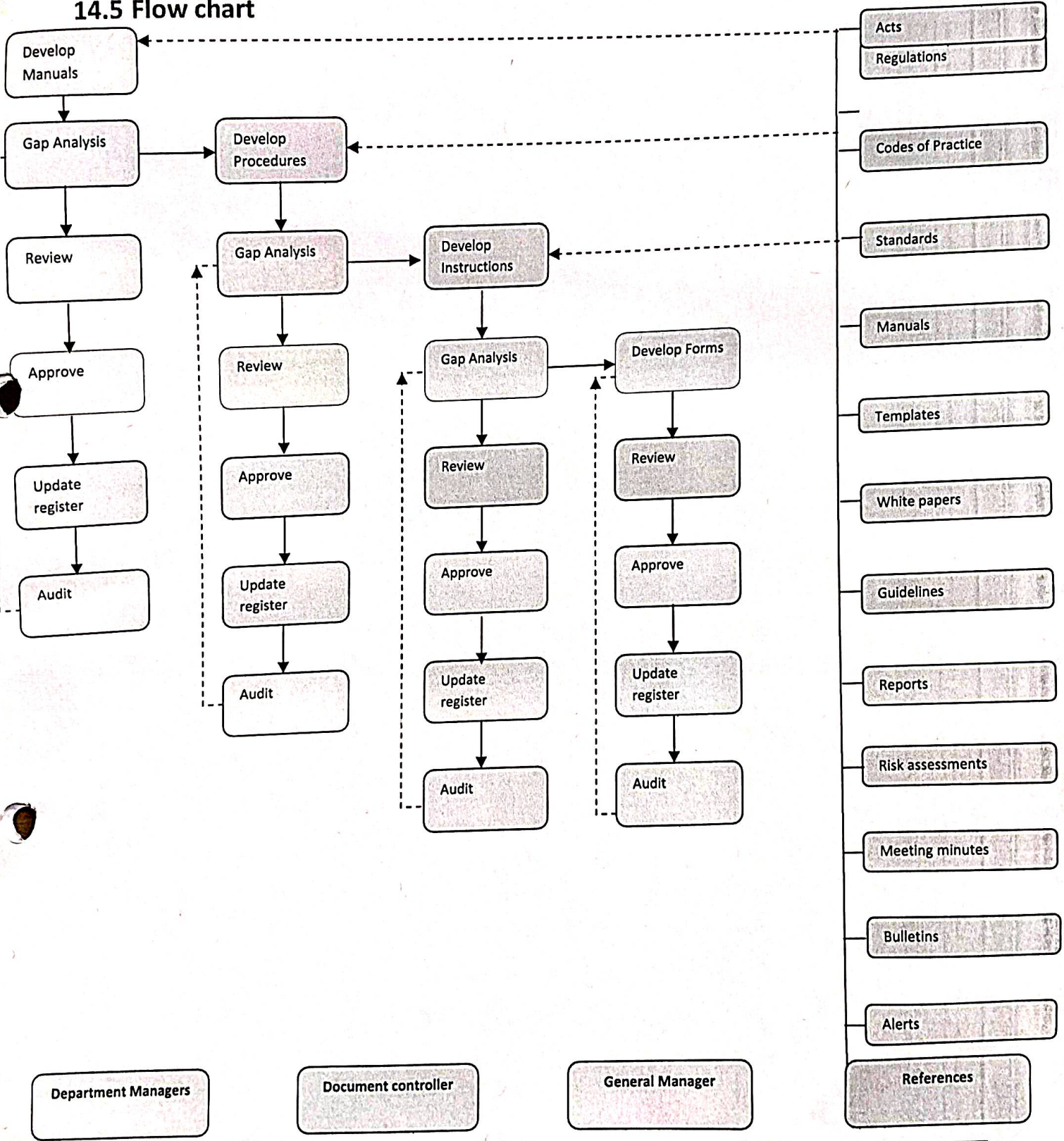
Any identified non-conformances that cannot be rectified immediately are recorded and entered into the CMMS system to generate a work order, together with the expected completion timeframe. A follow up inspection may be required in order for the non-conformance to be signed off.



AAC MINING EXECUTORS INDIA PVT LTD

EVALUATION AND EXECUTION OF EXPLORATION MINING AND ENGINEERING PROJECTS

14.5 Flow chart





AAC MINING EXECUTORS INDIA PVT LTD

EVALUATION AND EXECUTION OF EXPLORATION MINING AND ENGINEERING PROJECTS

15 References

Always check that reference documents are the latest print